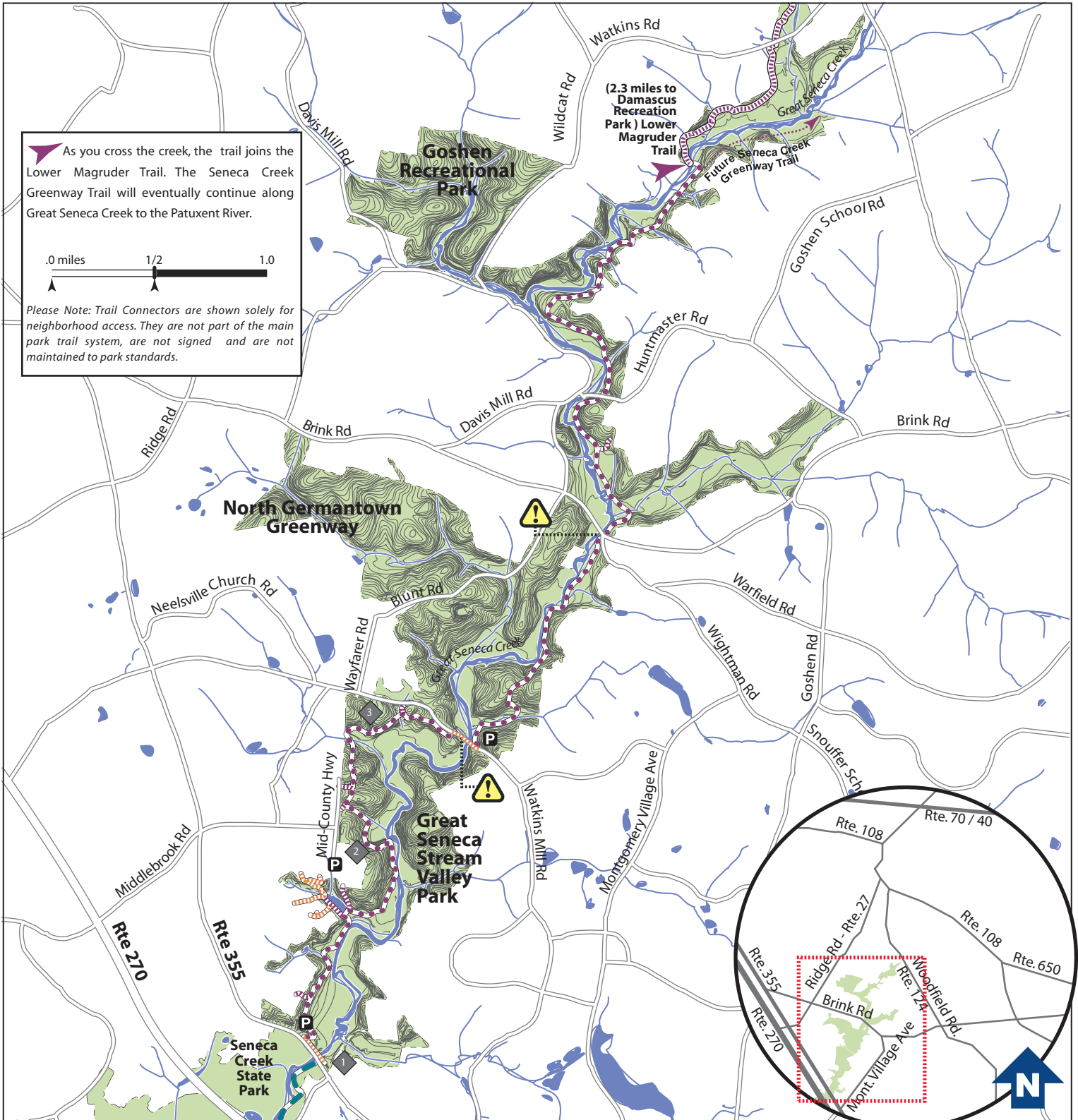




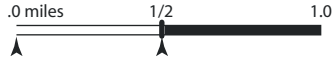
Seneca Creek Greenway Trail

Length: 7.1 miles of natural surface trails

www.MontgomeryTrails.org



As you cross the creek, the trail joins the Lower Magruder Trail. The Seneca Creek Greenway Trail will eventually continue along Great Seneca Creek to the Patuxent River.



Please Note: Trail Connectors are shown solely for neighborhood access. They are not part of the main park trail system, are not signed and are not maintained to park standards.

updated: jun 10

Trail Features

- Rte. 355 to Watkins Mill = 2.9 mi.
- Watkins Mill to Brink Rd = 1.5 mi.
- Brink Rd to Huntmaster = 0.9 mi.
- Huntmaster to Lower Magruder Trail = 1.8

- 1 Sidewalk & Underpass to State Park Trail
- 2 Scenic Overlook
- 3 Natural Rock Bridge

- Hard Surface Trail
- Trail Connector
- Natural Surface Trail
- Trail Connector
- Hiker/Biker Only Trail
- Trail Connector
- Hiker Only Trail
- Trail Connector
- Parklands & Topography
- Streams & Ponds

- Use caution crossing road
- Steep Slope
- Drinking Water
- Parking
- Phone
- Restrooms
- Picnic Area

Trail Issues: SmartParks 301.670.8080
 Non-emergency: Park Office 301.972.9396
 Emergency: Park Police 301.949.3010